



Destination
ESPERANCE
WESTERN AUSTRALIA

WESTERN
AUSTRALIA
WALKING ON A DREAM

Esperance

Park now open

RAC Esperance Holiday Park has undergone an extensive redevelopment. Enjoy brand new facilities and a wide range of accommodation options, from self-contained villas to ensuite sites. Pets are also welcome with designated cabins and sites, including an onsite pet washing station.

Book and relax with us.



The new and improved
RAC Esperance
Holiday Park
▼



**Esperance
Holiday Park**
For the better

Call 1800 871 570 or visit
racparksandresorts.com.au



Contents

WELCOME & TRAVEL TIPS	5
EVENTS & SEASONS	6
MARKETS	9
THE FORESHORE	10
THE COASTLINE	14
GREAT OCEAN DRIVE	16
EASTERN ESPERANCE	18
WESTERN ESPERANCE	22
COASTAL EXPERIENCE	24
LAKE HILLIER	26
WOODY ISLAND	28
PEAK CHARLES	29
MAPS	30
WALKS & HIKES	34
WILDFLOWERS	38
GALLERIES & SHOPS	40
HISTORY & CULTURE	42
FOOD & DRINK	46
LOCAL PRODUCE	48
TOURS	50
ACCOMMODATION	52
DIRECTORY	54

Published: October 2022 by Premium Publishers
Published for: Shire of Esperance; Australia's Golden Outback
and the Goldfields-Esperance Development Commission
Advertising enquiries: Natalie du Preez – natalie@premiumpublishers.com.au
Designed by: Wayward Nation
Printed by: Vanguard Press
Distributed by: Vanguard Distribution

Frenchman Peak, Cape Le Grand National Park
Image by: Australia's Golden Outback
Cover image: Lucky Bay

Welcome to

ESPERANCE / KEPA KURL

OUT OF THIS WORLD...

The Esperance Region hosts an abundance of extraordinary beauty in some of the world's best beaches and pristine coastline. Nowhere else can you savour endless stretches of easily accessible beaches that boast the brightest, whitest sand and crystal clear turquoise waters. Experience utterly breathtaking National Parks, intriguing wildlife, unique attractions, hidden getaways, hot summer days beside the sea, or sample the diverse local arts and produce scene. Discover the true Esperance Experience...



WHERE THE WATER LIES LIKE A BOOMERANG...

Kepa Kurl ('Kepa' meaning Water and 'Kurl' meaning Boomerang) has been home for the local Noongar people "since time immemorial". The culture is embedded in the land, caring for the land means caring for our people, our culture and our heritage.

VISITOR CENTRE

Museum Village, cnr Dempster & Kemp St,
Esperance, Western Australia, 6450

Ph: 08 9083 1555 or 1300 664 455

Book: bookings@visitesperance.com

Info: info@visitesperance.com

 Web: visitesperance.com



GETTING TO ESPERANCE

Flights arrive daily from Perth to Esperance, and TransWA offer luxury coachlines to Esperance departing from both Perth and Kalgoorlie. If roadtripping is more your thing, allow 7-8 hours direct drive from Perth or make Esperance just one stop throughout your self drive tour of the entire Goldfields region.

NATIONAL PARK NOTES

Follow the signs and stay on roads. Normal road rules apply. Help to protect our natural environment by staying on marked tracks and avoid spreading mud (dieback fungus), particularly following rain. Strictly no firearms or pets, or unlicensed vehicles.

For more information on any of the National Parks including access, road conditions, camping and entry fees etc., visit:

parks.dpaw.wa.gov.au

Area specific DPaw officers are always happy to help with all visitation enquiries.

Cape Le Grand NP: (08) 9075 9072

Cape Arid NP: (08) 9075 0055

Stokes NP: (08) 9076 8541

Esperance Office: (08) 9083 2100

COASTAL SAFETY

Esperance has a vast and spectacular coastline. While discovering the region, please ensure you are aware of the local risks and explore in a safe way. Here's what you can do:

Know the local hazards (stay off the slippery black rocks). Always have a plan. Be Prepared. Be SharkSmart (download the app and report all shark sightings to Water Police).

Your safety is your responsibility. Be safe so you can visit again.

PLAN YOUR ROAD TRIP

	Adelaide	Perth	Albany	Kalgoorlie	Hopetoun	Norseman	Ravensthorpe	Esperance
Adelaide		28hrs	28hrs	22hrs 30mins	25hrs	20hrs 30mins	24hrs	22hrs 30mins
Perth	28hrs		4hrs 30mins	6hrs 30mins	6hrs 30mins	8hrs	6hrs	8hrs
Albany	28hrs	4hrs 30mins		9hrs	4hrs	7hrs	3hrs	5hrs
Kalgoorlie	22hrs 30mins	6hrs 30mins	9hrs		6hrs	2hrs	6hrs	4hrs
Hopetoun	25hrs	6hrs 30mins	4hrs	6hrs		4hrs	40mins	2hrs
Norseman	20hrs 30mins	8hrs	7hrs	2hrs	4hrs		4hrs	2hrs
Ravensthorpe	24hrs	6hrs	3hrs	6hrs	40mins	4hrs		2hrs
Esperance	22hrs 30mins	8hrs	5hrs	4hrs	2hrs	2hrs	2hrs	

IMPORTANT CONTACTS

Fire, Police & Ambulance **000**

Esperance Taxi Service **(08) 9071 1782**

Dept. of Parks & Wildlife **(08) 9083 2100**

Department of Fisheries **(08) 9071 1839**

DFES - Bushfire Advice **13 33 37**

Shire of Esperance **(08) 9071 0666**

WA Road Conditions **1800 013 314**

Esperance Police Station **(08) 9079 8999**

Esperance Hospital **(08) 9079 8000**

Water Police - shark sightings **(08) 9442 8600**

RV FACILITIES

The Shire of Esperance provides a designated RV Dump Point on Sheldon Road (opposite the carwash).

VISITING WITH PETS

Esperance provides many places to stay with your dog whilst on holidays, with a list of pet-friendly accommodation available from the Esperance Visitor Centre. Be sure to double check where your pooch can visit, as Esperance is surrounded by several National Parks and nature reserves where dogs and cats are prohibited. There are, however, many areas of dog-friendly bushland and beaches.

Something for everyone

OUR EVENTS

Each year Esperance plays host to a myriad of local events and festivals, celebrating the uniqueness and identity of our great Southern Coast. Year round, you'll find exciting events on offer - from exhibition openings, to live music gigs, agricultural shows to state sporting competitions as well as nationally touring shows and

concerts, there is always something on! Whatever the event, enjoy the festivities and feel the warm welcome of our fantastic community.

To find out more information on what's coming up, head to our online events calendar or scan the QR code:

www.visitesperance.com/whats-on



Edge of the Bay Festival
Image by: Sarah Moroney

JANUARY

'There Goes The Sun' - Live Music Event
Australia Day in the Park
Moving Movies (Outdoor Cinema)
Esperance Speedway Season
Esperance Bay Turf Club Season

FEBRUARY

Esperance Speedway Season
Esperance Bay Turf Club Season

MARCH

Esperance Deep Sea Angling Classic
Esperance Bay Turf Club - Cup Day
Esperance Speedway Season
Condingup P&C Fair
Grass Patch Yabby Classic
South Side of Summer - Live Music

APRIL

French Weekend
ANZAC Day Ceremony
Tour d' Esperance

MAY

Mothers Day Classic Fun Run
Readers & Writers Festival

JUNE & JULY

Winter Solstice (Esperance Stonehenge)
NAIDOC Week Celebrations
Blues & Brews - Live Music

AUGUST

Esperance Music Festival

SEPTEMBER

Esperance Wildflower Festival

OCTOBER

Esperance Agricultural Show

NOVEMBER

Remembrance Day
Esperance Speedway Season
Esperance Bay Turf Club Season
'Balmy Nights' - Live Music Event
'Balmy Brunch' - Live Music Event
at the Esperance Markets

DECEMBER

Edge of the Bay Festival
'Saturday Night Vice' - Live Music Event
Summer Solstice (Esperance Stonehenge)
Christmas Pageant & Markets
Christmas Carols
Boxing Day Races
'Beach Dazed' - Live Music Event
New Years Eve on the Foreshore
Moving Movies (Outdoor Cinema)
Esperance Speedway Season
Esperance Bay Turf Club Season



It is no surprise that Esperance is an extremely popular destination over the summer period, but there truly is something on offer all year round. Unsure which season is best for you? We've broken down some key highlights:

SUMMER

Perfect sunny, warm-to-hot summer weather, endless turquoise beaches and miles of pristine coastline to explore.

AUTUMN

Calmer weather and balmy evenings make autumn the perfect time for visiting the National Parks and exploring the extensive walk trails.

WINTER

This time of year marks the beginning of the Southern Right Whale season, often seen migrating along the coast or playing in our secluded bays with their young.

SPRING

Wildflower season is in full bloom during the springtime. Witness the endless colourful vistas and diverse array of local flora and fauna as it comes to life.



Our local Noongar people continue to hunt and gather food according to the six seasons, with traditional bush foods consisting of kangaroo, emu, various seafoods, roots and seeds. Visitors to the region can observe these six seasons whilst staying in Esperance.

BIRAK

December and January, the first summer, known for being very hot and dry, the season of fire.

BUNURA

February and March, the second summer, with long days and short nights, it is the hottest of the six seasons.

DJERAN

April and May, autumn, heading into the cooler nights and dewy mornings.

MAKURU

June and July, the first rains and the coldest, wettest time of year.

DJILBA

August and September, the second rains, a transitional time of year with a mixture of wet days and some pleasant warmer weather.

KAMBARANG

October and November, the wildflower season, longer dry periods and warmer days.



Grace Barbe gets the crowd dancing at Balmly Nights 2021
Image by: Jonty Scoble

A LOCAL'S TAKE ON THE LIVE MUSIC SCENE

Esperance has an exceptionally vibrant music scene, with a number of venues offering a year round live music program.

The Cannery Arts Centre acts as a central hub for the local music community, regularly hosting open mics, contemporary music workshops and small to large scale ticketed events. Key events for the Arts Centre include 'Balmly Nights', the event returning for its fifth season in November 2022, and 'There Goes the Sun' set to fall late January 2023. Both are ticketed, 18+ and feature 6-7 acts comprised of local and touring artists.

Another highlight for the centre is its Club 75 series that falls through the winter months. These are small scale, lounge bar style intimate events that feature 4-5 solo artists.

Lucky Bay Brewing has emerged as a key supporter of the local music scene, hosting local and touring acts every Friday evening and Sunday afternoon. Their Friday and Sunday entertainment is free to attend and generally showcases solo acoustic artists on the Brewery large open verandah.

Lucky Bay Brewing, in collaboration with Kyza Presents, have developed a range of annual, family friendly, ticketed events for the Brewery with run times falling between 4-9pm. These include 'Beach Dazed' in December, 'South Side Of Summer' in March and 'Blues and Brews' in July.

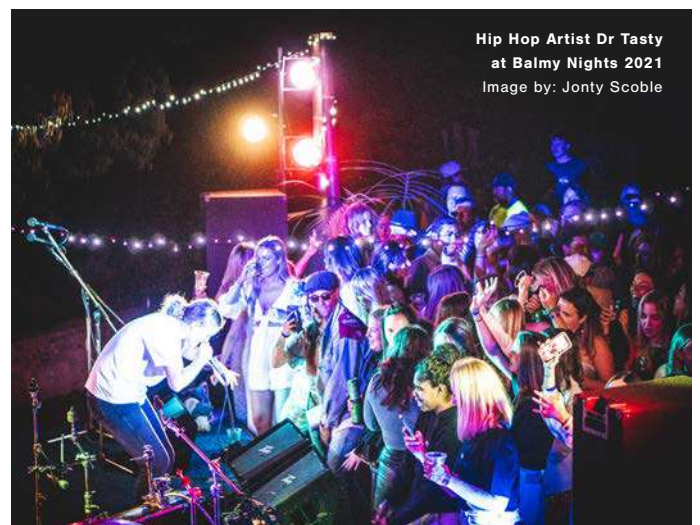
Within the town centre, The Pier Hotel and 33 Degrees regularly offer free live music, featuring a range of bands, solo acoustic acts as well as DJs most weekends.

For full details of current live music events, or to purchase tickets, head to www.kyzapresents.com

- *Kyza Presents*



Michael Dunstan performs at the Cannery Arts Centre
Image by: Jonty Scoble



Hip Hop Artist Dr Tasty at Balmly Nights 2021
Image by: Jonty Scoble

Fill your basket with local goodies

MARKET DAYS

SUNDAY MARKETS AT MUSEUM VILLAGE

In the heart of town, you'll find a quaint collection of heritage buildings that are home to an eclectic mix of shops – the Esperance Museum Village. Every second Sunday throughout the year, this space is home to the Museum Village Markets.

A bustling morning walking up and down the paths, you'll find scrunchies, sweet treats, tie-dyed clothes, handmade earrings, chilli jams and everything in between! Grab a bite to eat from the on-site café or one of the vendors, and pick up a few locally crafted souvenirs to remember your time in our slice of paradise.

Sundays 8:30am-12:30pm fortnightly.

Follow [@museumvillagemarkets](#) for the latest.



GROWERS MARKET

Held fortnightly on Saturday mornings, the Esperance Growers Market is the place to be if you want to stock your fridge with fresh local goodness. Fruit, veg, meat, eggs, honey, extra virgin olive oil, jams and preserves, you'll find it all in the Esperance Scout Hall.

There are also select food vendors preparing tasty treats to enjoy while you wander the stalls. Grab your basket and be sure to stop for a chat with the passionate stallholders who'll tell you all about their produce.

9am-11am every second Saturday.

Follow [@esperancegrowersmarket](#) for more information.



Esperance's Bay of Isles **THE FORESHORE**

There are few places in the world where a five minute walk from the centre of town can bring you to the beach. The Esperance waterfront celebrates our glorious coastline by linking the foreshore to the CBD. Unique landscaping presents a myriad of native plants, whilst historical art installations tell the tale of our ever evolving beach front.



JETTY HEADLAND PRECINCT

A waterside drawcard in town is the Jetty Headland precinct. Lush green lawns and native plantings are perfectly landscaped, with gas BBQs, toilets, showers and plenty of picnic shelters and seating scattered throughout the park. There are also food and drink vendors onsite covering your caffeine and takeaway needs, as well as a popular ocean themed nature playground with textural features designed to enhance the imagination and keep the kids entertained.

ADVENTURELAND PARK & MINIATURE RAILWAY

Located on the Esplanade, close to the town centre, the newly built Adventureland Playground is perfect for the kids to climb, zip-line, swing and run wild. Explore the pathways through tranquil gardens and feed the resident ducks. Kids of all ages can ride the Miniature Railway (open holidays and weekends from October through to April and opening at 9am).

JAMES ST. PRECINCT

The James Street Precinct is a key part of the waterfront, providing direct beach access close to the town centre, as well as an "all abilities" playground for younger children / toddlers. Featuring picnic shelters, gas BBQs, enclosed swimming area, large shaded area, seating with ocean views, landscaped lawns, beach access stairs, showers and toilet facilities.

Don't forget to take your photo in front of the iconic Whale Tail Sculpture (created by local artists Cindy Poole and Jason Wooldridge).

TAYLOR STREET JETTY

Wander the Taylor Street Jetty precinct and admire the vessels penned up at the dock. Take a stroll along the beach in front of the Esperance Bay Yacht Club and view the giant ships loading up at the working port.



Youth Precinct
Image by: Shire of Esperance

SKATE PARK & PUMP TRACK

The Esperance Skate Park and Pump Track precinct is surrounded by an expansive grassed area and situated right on the town waterfront recreational areas. The skate park is utilised by all generations with the design incorporating a number of different skate elements to provide continued progression for beginners through to experienced users.

The Esperance pump track contains three endless loops with rollers and berms and a pump bowl designed to be ridden without pedaling, instead using a pumping motion, pulling up on the face of rollers and pushing down on the backside. The pump track is suitable for mountain bikes, BMX and cross bikes to improve mountain biking skills.

Accommodation by the sea ...

THE JETTY RESORT

Offers all the key ingredients for a rejuvenating getaway by the water's edge, with our luxury rooms overlooking the ocean.

Top class facilities include outdoor swimming pool, BBQ and gazebo, large playground, guest laundry, Foxtel on large TVs, and undercover parking.



The
Jetty
Resort

ACCOMMODATION OPTIONS

The Jetty Resort provides a variety of accommodation options to suit all budgets and travellers, and there's a style to match every visitor's needs.



2 Dempster Street, Esperance WA 6450

Phone (08) 9071 3333

reservations@thejettyresort.com.au

www.thejettyresort.com.au



Esperance's newest icon
THE JETTY



NEW ESPERANCE JETTY

The defining feature of the Esperance Foreshore is the reconstructed Esperance Jetty, which was officially opened on 28 March 2021. The first section of the jetty has been designed with heritage in mind, paying homage to the original Tanker Jetty. Measuring 415m in length, the Esperance Jetty reflects the classic curvature of its predecessor and incorporates a series of interpretive features as well as fishing and diving platforms.

Fishing is a popular activity here, with a series of fishing platforms and fish cleaning stations found along the length of the jetty. Interpretive signage shows species commonly found in the area including herring, skippy, whiting and flathead. The Esperance Jetty is also a prime location for catching squid, with the overhead lights helping attract these creatures in the evenings.

A dive trail from the end of the jetty is another must-do for all ocean lovers. Divers can use the dive platform to launch and make their way 50-100m from the end of the jetty to view the artificial reef. There is a vast array of seaweed species down below, and amongst them is the perfect hiding place for the Leafy Sea Dragon, as well as a host of other marine life.



Esperance Jetty
Image by: Shire of Esperance

Our picks for swimming **THE COASTLINE**

Make a splash at our pristine beaches! Swimming, snorkelling, paddle boarding or surfing - our coastline has your perfect spot for an aquatic adventure, whether in town or off the beaten track.



West Beach

Image by: Australia's Golden Outback

WEST BEACH

A favourite with Esperance residents and only 3km from town centre, this extraordinarily beautiful beach features swimming lagoons between the reef and shore, as well as popular surf breaks. Beautiful sweeping shorelines provide the perfect canvas for a leisurely stroll, or to simply sit and watch the waves roll in. View the iconic “Dempster Head” headland to the eastern end of the beach as it drops down into the sea, or surf the break off Chapman’s Point and explore this headland at the opposite end.

Facilities: showers and toilets. (Pet friendly.)
Rips can be prevalent here, so the beach should be approached with caution.

BLUE HAVEN

A hidden treasure at the bottom of a winding staircase, tranquil turquoise waters and extremely protected conditions make this one of the most ideal spots for swimming. (Pet friendly.)

FOURTH BEACH

“Fourths” offers a sweeping endless beach, very popular for those who are passionate about water sports. Find the perfect spot for a surf, body board, paddle board or kite surf along this long stretch of coast. (Pet friendly)

TWILIGHT BEACH

A spectacular family beach that is located only 10km from the town center, Twilight Beach is renowned for its crystal clear waters and snow white sand. The beach is patrolled by life savers during the summer weekends. A very safe beach for swimming, paddling, surfing, snorkelling and paddle boarding. Easy to access with few stairs and a large parking area (RVs, caravans and coaches).
Facilities: outdoor showers and toilets.

TEN MILE LAGOON

Fantastic swimming beach 19km from town, particularly for young families. A rocky shore acts as a natural breakwater, forming a long majestic pool that is considerably warmer than the ocean. Suitable for paddling, swimming, boogie boarding and surfing – whilst you’ll also spot people fishing off the reef. For naturalists, Esperance’s ‘free’ (nudie) beach is located 200m further down. (Pet friendly.)

ELEVEN MILE BEACH

With protected bays on both sides of the coast, you are certain to find a picturesque swimming spot. There is a lengthy lagoon perfect for paddling in the calm shallows. (Pet friendly.)

OBSERVATORY POINT

Sweeping cliffs and an epic sheer drop into the ocean sets this hotspot apart - perfect for wind and kite surfers, and the view from the carpark is remarkable. Whales can be spotted during whale season (July - October) and a sunset here is not to be missed!
Facilities: Lookout. (Pet friendly.)

BANDY CREEK

A favourite with the locals, located next to Bandy Creek Fishing Boat Harbour and close to town. This beach features a long shallow bank that drops away suddenly to provide access to the harbour for boats and fishing vessels. The perfect location for paddling, swimming, paddle boarding, canoeing and fishing. The beach is accessible by 2WD vehicles and is very sheltered. An ideal family beach. Facilities: toilets at the boat harbour. (Pet friendly.)

WYLIE BAY

Wylie Bay is accessible to 4WD vehicles, and features a sheltered headland with swimming area and calm waters (no camping allowed). This first section is pet friendly. Check tide / beach conditions.



Self drive touring

GREAT OCEAN DRIVE



Great Ocean Drive
Image by: Tourism WA

Sand Dunes

Image by: Australia's Golden Outback



GREAT OCEAN COASTAL DRIVE

Esperance's Great Ocean Drive is a 40km circular coastal self-drive route embracing Esperance's most spectacular coastline, tranquil bays, soaring cliffs and sprawling views over the famous Recherche Archipelago (otherwise known as the Bay of Isles, a group of 105 islands). Stop in to enjoy any of the stunning beaches, rocky headlands, small bays, steep cliffs and hidden ocean pools.

It's more than a 'quick drive around the coast', with so much to experience along the way. From snorkeling, surfing, swimming, bike riding, bush walking, whale watching (July - October) there is something for everyone to enjoy! The Drive encompasses a number of picturesque lookouts and coastal vantage points. The Great Ocean Drive Map can be found on page 32 and a list of key lookout locations listed opposite.

TOP LOOKOUT LOCATIONS

ROTARY LOOKOUT

Wireless Hill, 3.1km from town

BLUE HAVEN

6.7 km from town

SALMON BEACH

7.2 km from town

FOURTH BEACH

Multiple pull off bays for photos

TWILIGHT BEACH

11.1 km from town, pull over bays

OBSERVATORY POINT

15.5 km from town

10 MILE LAGOON

19 km from town

11 MILE BEACH

21 km from town

PINK LAKE LOOKOUT

5 km from town

CANNERY LOOKOUT

Located behind the Cannery Arts Centre in town, overlooking the Bay of Isles.

GREAT OCEAN WALK TRAIL

There's more than one way to experience the Great Ocean Drive. A cycle/walk path winds through the landscape, following the coast from the Esplanade all the way to Twilight Beach (from town), and then winds through stunning native bushland to the Pink Lake Lookout.

Elevated limestone headlands, sheltered dunes and exposed heaths provide wonderful vistas of seasonal natural flora. Stop for a while along the way and take a closer look for intricate coastal wildflowers. More info can be found on page 34.



Head out of town to **EASTERN ESPERANCE**

As you head east of Esperance, you'll notice the sand seems whiter and the water gets bluer. It's a magical sight, and you'll soon understand why some of these spots have been consistently voted among Australia's Best Beaches. You'll want to allow a few days to explore the stunning coastline this side of town, with campsites, limited accommodation and even an outback pub option along the way. No matter where you venture, you'll be blown away by the crystal-clear water and stunning scenery.

CAPE LE GRAND NP.

Possibly the most spectacular of the Southern Coastal National Parks is Cape Le Grand. Located approx. half an hour east of Esperance, the park offers rolling heathlands and many sheltered turquoise bays where the clean white sand literally squeaks underfoot. Swim in a sheltered nook at Hellfire Bay, Lucky Bay or Thistle Cove (home to the Whistling Rocks).

Frenchman Peak (pictured above) was named by surveyor Alexander Forrest during an expedition in search of good country for pasture in 1870. The peak's shape was thought to resemble the hats worn by French troops in the 1800s.

A large cave near the summit is thought to have formed by wave action and underwater currents during a period some 40 million years ago when sea levels were at least 300 metres above their current level.

Boats may be launched with caution from Lucky Bay Beach, as well as Le Grand beach. Dunn's Rock on the eastern end of the National Park is also a picturesque and popular fishing spot, but is 4WD only.

CAMPING AT CAPE LE GRAND

The Le Grand and Lucky Bay Campgrounds both have camp kitchens, gas barbecues, picnic tables, toilets, showers and non-drinking water. No power is available and fires are not permitted.

National Park entry fees apply. Bookings are essential prior to arrival at Le Grand and Lucky Bay campsites and must be booked at www.parkstaybookings.dbca.wa.gov.au

The drive from Esperance to Cape Le Grand National Park is by sealed road. Roads to all recreational sites within the park are also sealed, except for the road to Rossiter Bay, which is graded for 2WD.

HELLFIRE BAY

Part of the Cape Le Grand National Park, this magnificently sheltered bay offers beautiful conditions for a dip or boogie board with the kids, as well as enough space for a game of beach cricket. Explore the many walk trails leading to and from the beach, or park at the adjacent picnic area and stop for a BBQ lunch. 56km from town. Facilities: BBQs, toilets.

National Park entry fees apply.

THOMAS RIVER

Offering an array of natural wonders with abundant bird life and great fishing, this popular camping and fishing destination is perfect for families. All beaches have 4WD access – meaning you are sure to find your own section of uninterrupted beach! Don't miss the sights of Yokinup & Little Tagon Bays, as well as where the Thomas River meets the sea. 122km from town. Facilities: camping grounds (fees apply) BBQs, toilets. Park entry fees apply.

CAPE ARID NP.

This exceptionally large National Park covers an area of 2,794 km² and is best known for its stunningly beautiful beaches, clear blue seas and rocky headlands. Approx. 120km east of Esperance and accessible by road, most of the National Park itself is 4WD only.

Cape Arid is a wildly beautiful and biodiverse area. Coastal sand heaths, mallee and low granite hills extend inland to Mount Ragged.

This near-pristine wilderness is an important conservation area for 1100 species of plants and more than 160 bird species, several of which are threatened or endangered. Migrating whales pass by close to the headlands in late winter and spring.

All areas within the National Park are remote locations and it is crucial to be fully self-sufficient. Take camping gear, ample water, non-perishable food, first aid kit, recovery gear, CB radio and extra fuel.



Lucky Bay, Cape Le Grand National Park
Images by: Jarrad Seng

KANGAROOS ON THE BEACH

Lucky Bay is home to an iconic colony of beach-dwelling Western Greys. These kangaroos are often spotted meandering across the white sand of Lucky Bay, interacting with visitors, and basking in the sun in the warmer months. Please remember to not feed the kangaroos or any of the other wildlife.

LUCKY BAY

Located in the Cape Le Grand National Park, this unspoilt and spectacular beach features sand so fine and so clean it literally squeaks underfoot.

The bay is well protected from the elements and is ideal for swimming, snorkelling, diving, fishing, boating and surfing. The recently upgraded camping facilities offer a fantastic bush setting overlooking the turquoise water.

When you're not soaking up the sun, surf and sand, explore the rest of the park area, which offers bush walking and several hiking trails nearby. 66km from town.

Facilities: BBQs, shade shelters, hot showers, toilets, however be sure to bring drinking water. National Park entry fees apply.



Wharton Beach
Image by: Australia's Golden Outback

'THE DUKE'

The Duke of Orleans is a favourite with the locals just as much as it is with visitors. Nestled between Cape Le Grand National Park and Cape Arid National Park, the Duke offers a variety of small sheltered bays and boasts magnificent coastal scenery.

The Duke is ideal for swimming, fishing, boating, paddle boarding, surfing and diving all year round.

During wildflower season the area in and around the Duke is brimming with unmissable blooms. 4WDs have access to most beaches (including Wharton Beach) and you are sure to find one that is sheltered enough for a swim – no matter the weather!

The Duke of Orleans Caravan Park offers a range of camping accommodation and chalets and is the perfect base to explore the surrounding areas and dogs are allowed! 89km from town. Phone ahead to book.

WHARTON BEACH

Classed as one of the most iconic and prettiest beaches in Esperance, located in the Duke of Orleans Bay, is Wharton Beach.

A favourite with Esperance locals, the sand at this beach is so fine, it actually squeaks underfoot. Boasting a peaceful, relaxed and tranquil vibe, this beach is the perfect location to pull up for the day and chill out.

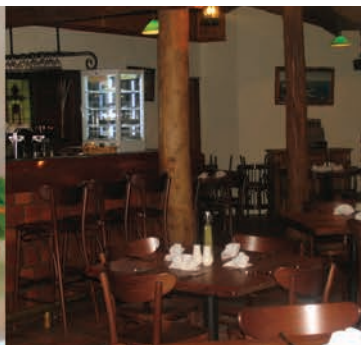
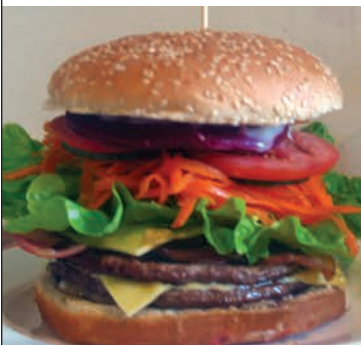
Wharton Beach is also one of the most popular surfing spots in the region for those who are keen to get out there on your boards, and you might even spot a pod of dolphins joining you in the waves.

Wharton Beach is a little further away from town (about a one hour drive), but totally worth it. If the drive puts you off, why not break it up with a stop in at the famous Condingup Tavern? Grab yourself a pub meal and a coldie with the crew to really top off your coastal experience.

ALEXANDER BAY

Enjoy sprawling views of the coast and fine white sand. A long sweeping beach and sheltered bay that is fantastic for swimming, fishing, camping and surfing. Beach access is 4WD only. 108km from town. Facilities: camping ground (fees apply) and toilets.

CONDINGUP TAVERN



CAFÉ/RESTAURANT

- Beer Garden
- Coffee & Cake – All Day
- Lunch & Dinner
- Display of History

GENERAL STORE

- Fuel
- Takeaway Food/Drinks/Coffee
- Bait & Ice
- Groceries

MAIN BAR

- Counter Meals
- Tap Beers
- Takeaway Alcohol
- Open Fires

OPEN 7 DAYS | Cnr Eyre & Parish Streets, Condingup
Phone: 9076 6024

Discover the East of Esperance



Destination 1: Cape Le Grand

Attractions include Lucky Bay & Hellfire Bay, this is a must see!

Destination 2: The Duke of Orleans

After winning many awards Wharton beach is unmissable.

Destination 3: Condingup Tavern

Stop at the Condingup Tavern and enjoy for lunch / dinner or coffee and cake.

Destination 4: Cape Arid National Park

Well worth exploring particularly in wildflower and whale seasons.

Adventure further out **WESTERN ESPERANCE**

Hidden up and down the coast west of town, you'll find all kinds of salty magic and some epic surf spots - if you know where to look. There are also numerous inlets and estuaries, great for fishing. Most of these beaches are 4WD access only, meaning a perfect day trip for those who love adventure and getting off the beaten track. So, pack the car with a picnic, fishing tackle and beach gear and hit the road.

STOKES INLET

The Stokes National Park is located approx. 80 km west of Esperance. The park features one of the most picturesque estuaries along WA's southern coastal region and is a great place for fishing, camping, bushwalking and birdwatching. The 14 square kilometre inlet features long beaches and rocky headlands backed by sand dunes. Dense bush and shady paperbark trees fringe the water's edge and is teeming with abundant birdlife. Stokes Inlet is the largest of a number of estuaries around Esperance, and the only one with reasonably deep water. Visitors can walk to the Estuary mouth if water levels allow. The inlet is also popular for fishing and canoeing and it is possible to launch small boats from the campsites. Be aware, however, that although the area of water looks large there are extensive areas of shallows and rocks. Normal fisheries regulations apply in national parks. Species caught include Black Bream, Australian Salmon, King George Whiting and Mullet. National Park entry fees apply.

CAMPING AT STOKES

Visitors can camp at Stokes Inlet (2WD), or Skippy Rock, Shoal Cape and Fanny Cove (4WD only). All these require entry fee as well as camping fees (cash in an honesty box). The Stokes Inlet campground provides toilets and BBQs. Fanny Cove, Shoal Cape and Skippy Rock only have a toilet. Bring enough drinking water for your needs as there is none available in the park.

MOIR HOMESTEAD

Visit the interesting historical ruins of the 1870's Moir Homestead, just a short distance from the shores of Stokes Inlet. Visitors are welcome to wander and explore the ruins and homestead site, the dwelling consisting of roofless limestone walls, however access via Fanny Cove Track is suitable only for high clearance 4WD vehicles. National Park entry fees apply.

QUAGI BEACH & CAMPSITE

Located 80km west of Esperance, Quagi beach is a jewel of the west. The beach is popular for fishing and snorkelling, while the coastal vistas provide plenty of scope for some spectacular bushwalking. The Quagi camp site has a good road surface, making it accessible by 2WD. Please note there are no bookings, it is first in best dressed. Dogs are allowed (on lead) and you must be self-sufficient (food, drinking water, fuel) and be fully prepared for any situation. Campsite facilities: Toilets. Camping fees apply.



**11:30AM FRIDAY.
YOUR FAVOURITE REST SPOT**

It's easy to say yes to adventure when you have your rock by your side. He's always been your greatest supporter, giving you the confidence to leave your comfort zone. This week's challenge? Hiking up Frenchman's Peak. You might not make it all the way to the top, but you'll give it a go - your knees and will are strong. And think of the selfie. The grandkids would be delighted. For road tripping with your best friend, there's no place like Dôme.

Albany, Bunbury, Busselton, Dunsborough, Esperance, Geraldton, Kalgoorlie, Katanning, Margaret River, Newman, Northam, Port Hedland, Rottneest

DÔME[®]

DOMECOFFEES.COM

Life on the high seas

COASTAL EXPERIENCE

SEA LIONS & THE NEW ZEALAND FUR SEAL

Australian Sea Lions are found on many rocky outcrops throughout the Recherche Archipelago. The male sea lions represent only approx. 10% of the population and stand proud with a distinctive lion's mane marking running down their back. The New Zealand Fur Seal can be spotted offshore and enjoy putting on a display of impressive diving and synchronized swimming.

DIVING

The many islands of Esperance's Recherche Archipelago are bound by crystal clear turquoise water and provide large caves, boulders and swim-throughs for divers to explore. There are many breathtaking shore dive sites to choose from, as well as wreck diving at the Sanko Harvest (174m Japanese bulk carrier and second largest wreck dive in the world) and the Lapwing (32ft wooden hulled fishing vessel). Esperance is rated as one of the ten best dive locations in Australia and is one of the few locations in the world that is home to the Leafy Sea Dragon.

SOUTHERN RIGHT WHALE SEASON

The Southern Right Whale migrates along the Esperance coast from June to October and can be seen frolicking in the water or sheltering with their young in one of our many protected bays.

Visit one of the many spectacular vantage points to witness their size and display: Israelite Bay (4WD only), Cape Arid / Thomas River, Cape Le Grand beaches, the Esperance town bay, or one of the many lookouts on the Great Ocean Drive. Esperance Island Cruises offers an oceanic journey through the Recherche Archipelago where the Southern Rights can be spotted from the deck (seasonally dependant).

DOLPHINS

Both the 'common' and the bottlenose dolphins can be spotted playing off the Esperance coastline. Graceful and lively, these mammals can often be spotted from the shore, share the bay with swimmers, ride a wave with fellow surfers, or cruise the water with boats and vessels.



FISHING FROM A BOAT

Fishing in Esperance is not just limited to the beach. Offshore fishing provides anglers with a superior selection of deep sea fish species; Nannygai (Pink Snapper), Swallowtail, Queen Snapper (Blue Morwong), Samson Fish, Break Sea Cod, Harlequin Fish, Groper, Tuna, Sargeant Baker, Snook, Herring, Whiting, Skippy, Sweep and Wrasse are all commonly caught. Boat fishing licence is required. Boat launching facilities and ramps are located at Bandy Creek Boat Harbour and on the Esplanade in town (next to the Scout Hall and Yacht Club). Boats can also be launched with care from Lucky Bay Beach, Duke of Orleans Beach and Stokes Inlet.

BEACH FISHING

Esperance and the entire southern coastline offers an abundance of exceptional beach fishing locations to choose from, each with their own magnificent views from some of Australia's most breathtaking coastline.

FRESHWATER FISHING

There are bountiful amounts of Black Bream in the fresh water lakes around the Esperance region. Lake Windabout has a plentiful supply, as does Bandy Creek - or for somewhere further out of town try Stokes Inlet.

Middle Island **LAKE HILLIER**

Picture a lake of the brightest bubblegum-pink sitting beside the deepest blue ocean. Lake Hillier is one of the extraordinary sights you'll see flying or cruising through the pristine wilderness of the Recherche Archipelago. Lake Hillier is actually located on Middle Island, the largest of the Recherche Archipelago islands and is 11 kilometres from the coast of Cape Arid National Park and 70 nautical miles from Esperance.

The lake is separated from the Southern Ocean by just a thin strip of sand and it's widely believed that the water's pink colour is due to the extremely high level of salinity. Measuring 600 metres wide and shaped like a footprint, this relatively small feature has a huge impact when viewed from a scenic flight or cruise, and the untouched islands of the Recherche Archipelago create a stunning backdrop, rich in marine life.

The island is an A Class Nature Reserve vested with the Department of Biodiversity, Conservation and Attractions (DBCA).

Local legend has it that Black Jack Anderson, Australia's only known resident pirate, once inhabited Middle Island for ten years!

SCENIC HELICOPTER ADVENTURES

SHOWCASING ESPERANCE'S PRISTINE COASTLINE AND THE FAMED PINK LAKE OF MIDDLE ISLAND'S LAKE HILLIER



HeliSpirit



BOOK ONLINE helistpirit.com.au | 0428 721 776



FLY 
ESPERANCE
SCENIC FLIGHTS

TOUR 
ESPERANCE
4X4 ADVENTURES



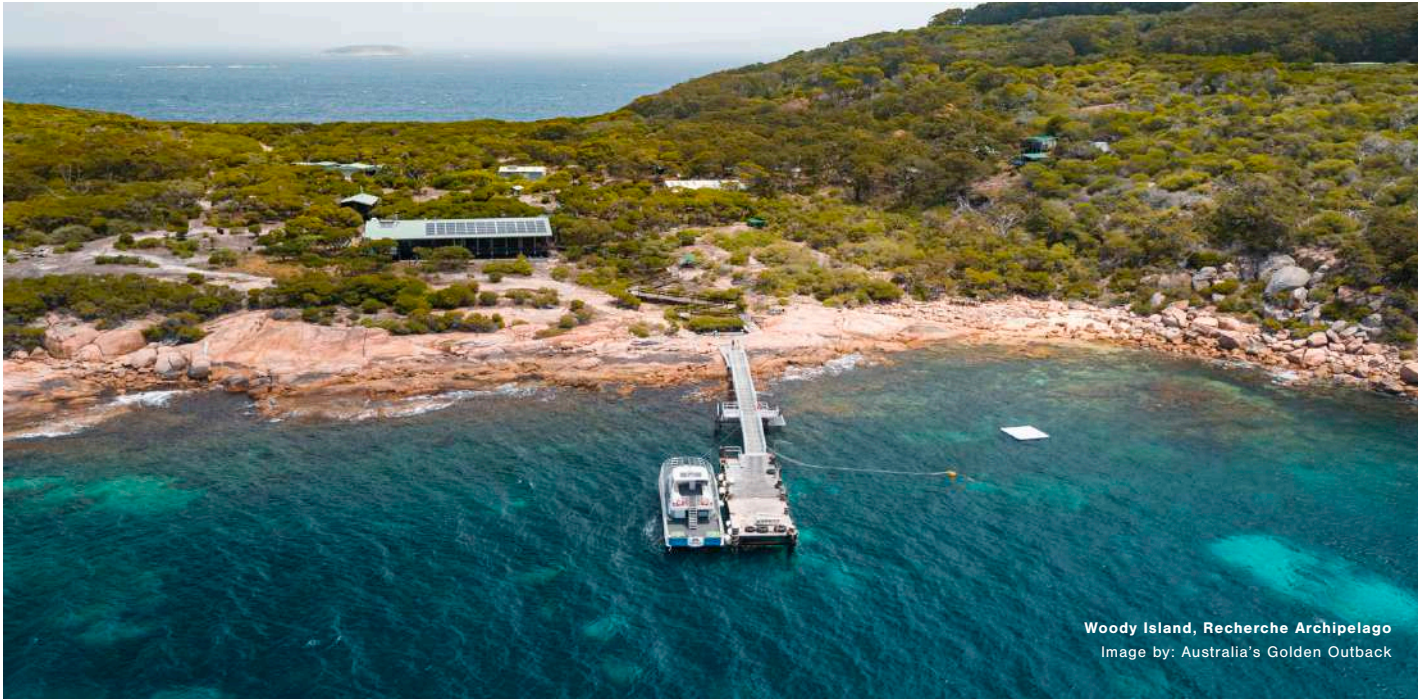
SCENIC FLIGHTS | 4X4 TOURS | TOUR PACKAGES | AIRPORT SHUTTLE

BOOK ONLINE

WWW.FLYESPERANCE.COM

WWW.TOURESPERANCE.COM

1800-951-251



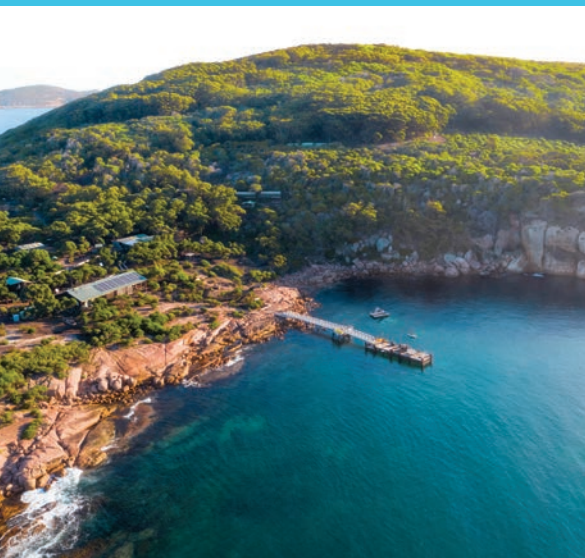
Woody Island, Recherche Archipelago
Image by: Australia's Golden Outback

My island adventure **WOODY ISLAND**

Rich in history, Woody Island is one of the 105 islands in the Recherche Archipelago located just 15km off the coast of Esperance. The island is ideally situated to provide you and your family/friends/colleagues a daytrip or overnight adventure out of Esperance. Offering a delicious vista of flora, fauna and marine life, its remoteness in the Southern

Ocean makes it a pristine haven for all kinds of wildlife, much of which can't be seen on the mainland - fur seals, sea lions, dolphins, various marsupials, grey kangaroos and a range of exquisite birdlife including the rare sea eagle are all found over on Woody. Located only a 40 minute ferry ride from Esperance, overnight accommodation is

also available on the island - think family and couple's tents, safari huts and even an ultimate "glamping" experience! The island also features a visitor centre / kiosk with food, drinks, snorkelling and fishing equipment for hire, as well as licensed bar facilities. Camp kitchen and BBQ facilities are also available for overnight guests.



WOODY ISLAND
ECO TOURS
Esperance • Western Australia

Woody Island Eco Tours will get you over & onto the unique, untamed and iconic Woody Island. Return ferry ride, guided bush walk, morning tea & a range of accommodation options.
We operate from 23 September 2022 to 6 June 2023 with day tours running everyday depending on numbers. Accommodation available throughout the season to suit all.
Departing Daily: Taylor Street Jetty



Lookout, Peak Charles National Park
Image by: Sarah Moroney

On top of the world **PEAK CHARLES**

Located 174km north-west of Esperance, the Peak Charles National Park lies within the Great Western Woodlands, and is internationally significant with great biological richness. Peak Charles towers 500m above the surrounding plain and is visible for more than 50km in all directions, also providing sweeping views over the surrounding heaths and saltlake system.

The walk to the Peak Charles Lookout is a 1hr (2km) climb. For the more adventurous, take the Peak Charles Summit 3hr (3.4km) climb. More information on these walk / hike trails can be found on page 36.

Numerous birds live on and around the peaks. Often several pairs of majestic wedge-tailed eagles can be seen, circling high in the sky. The Peak Charles National Park has an area

designated for camping, but there are no facilities apart from a bush toilet and walk trail and for most of the year there is no fresh water. Therefore, it is necessary to be fully self-sufficient and to carry adequate water. All roads accessing the national park are gravel and 4WD is highly recommended. Depending on the severity of weather conditions, some roads entering the park can be closed. Contact DPaW for more info.





PLACES OF INTEREST

1. Woody Lake Nature Reserve
2. Castletown Jetty Ruins
3. Bay of Isles Leisure Centre (Pool)
4. Jetty Headland
5. Taylor Street Jetty
6. Adventureland Park
7. Tommy Windich Cultural Precinct
8. Rotary Lookout
9. Salmon Beach Wind Farm

Approximate Distance from Esperance (km)

Lake Monjigup	10
Helms Arboretum	17
Gibson	25
Cape Le Grand National Park	49
Condingup	68
Mt Ridley	73
Stokes National Park	85
Duke of Orleans Bay	90
Munglinup	107
Cape Arid National Park	156
Peak Charles	175

Legend

	Sealed Roads		Point of Interest		Lookout
	Unsealed Roads		Public Parks		Caravan Park
	Walk & Cycle Way		Supermarkets		Playgrounds
	Railway		Cemetery		Public Barbeque
	Visitor Centre		Dump Point		Picnic Bench
	Information Bay		Boat Ramp		Sheltered Picnic Bench
	Petrol Station		Golf Course		Canoeing Trail
	Auto. Teller Machine		Parking		Walking Trail
	Laundromat		Public Rest Room		Recycling Station



TOWN CENTRE ENLARGEMENT

1. Esperance Public Library
2. Museum Village
3. Esperance Civic Centre
4. Shire Administration Office
5. Sound Shell
6. Parks & Wildlife Services Office
7. Esperance Museum
8. James Street Precinct
9. James Street Jetty & Pontoon
10. Esperance Youth Precinct

GREAT OCEAN DRIVE (below)

1. Cannery Arts Centre
2. Jetty Headland
3. James Street Precinct
4. Taylor Street Jetty
5. Rotary Lookout & Walk Trail
6. Lovers Cove
7. West Beach
8. Chapmans Point
9. Salmon Beach Windfarm
10. Blue Haven
11. Salmon Beach
12. Fourth Beach
13. Twilight Cove
14. Dolphin Cove
15. Observatory Point
16. Observatory Beach
17. Nine Mile Beach
18. Ten Mile Lagoon
19. Eleven Mile Beach
20. Pink Lake Lookout
21. Cindy Poole Glass Gallery





**HOSPITALITY
MOTEL**

For business or leisure,

there's always a little something extra...

- Central town location opposite the bay
- Pool, restaurant, cocktail bar, BBQ & guest laundry
- Free wireless broadband internet, FOXTEL
- Free tea, coffee & biscuits in your motel room



Hospitality Esperance, SureStay Collection by Best Western

44-46 The Esplanade, Esperance P: 9071 1999

E: esperance@hospitalityinns.com.au W: www.hospitalityinnesperance.com.au



**Looking for something
to escape the wind?**

With a fully equipped gym, large range of H&F classes, crèche, choice of three pools, a spa & sauna, there's something for everybody!



Black Street, Esperance WA 6450
 (08) 9083 1700
www.esperance.wa.gov.au
 @BOILC

Explore on foot

WALKS & HIKES

Whether you're a casual stroll with a coffee in-hand type walker, or a hard-core hiker, there are plenty of beautiful walk trails in the Esperance region. With a good mix of paths in town, coastal and inland, be sure to plan ahead and check out trailswa.com.au for a comprehensive list with maps and detailed information.



GREAT OCEAN WALK & CYCLE TRAIL

Difficulty: Easy - Medium

A 17km sealed pathway that takes in all of Esperance's best beaches from the Esperance Bay to Twilight Beach. Suitable for walkers, runners, pram pushers and cyclists, you can start and finish anywhere along the trail and be guaranteed some beautiful views. Start at the Esplanade and head west to Twilight Beach – from there you can either head back the way you came, or head north and follow the shores of Pink Lake back to town.

ESPERANCE ARTS & CULTURE TRAIL

Difficulty: Easy

The Esperance Arts and Culture Trail is a self-guided tour of arts and culture in the region. The trail is designed to link in with the bigger Goldfields-Esperance Arts and Culture Trail and provides a snapshot of the significant contribution that arts and cultural activities make to the life of our community.

For more info and extra arts listings visit www.esperanceartsandculturetrail.com.au

ROTARY WALK TRAIL

Difficulty: Easy - Medium

From town, head up to Dempster Head and take the spiral stairs to the Rotary Lookout to take in beautiful 360-degree views of Esperance. With a large interpretive map on-site, you can then take one (or all three) of the walk trails indicated by different coloured markers, either heading over the granite formations to take in stunning views of West Beach or down to the protected and beautiful Lovers Cove. Pack your swimmers and a picnic to make the most of your experience on these trails!

FRENCHMAN PEAK

Difficulty: Medium

Located in the Cape Le Grand National Park, this 262m climb will take your breath away - in the best way possible! Follow the marked trail to the summit where you will be rewarded with panoramic views of the national park's bushland and ocean. Allow 1.5hrs to complete the hike and be sure to take your rock cave selfie while you're up there.

LAKE MONJINGUP NATURE RESERVE

Difficulty: Easy

The ideal spot for a picnic, with multiple walkways and trails - including a board walk on the Lake, bird watching shelter and a hot spot for wildflowers in spring! A short drive from town, add this to your "must-explore" list when visiting Esperance!



PEAK CHARLES

Difficulty: Medium - Hard

Ever wonder how far your echo will travel 500m above ground level? If you tackle this 3.2km trail, you can find out. Take in the rock formations and flora and fauna on the journey to the top where you will find exceptional views from every direction. See also page 29.

LEN OTTE NATURE TRAIL

Difficulty: Easy

A 1km (1 hour) walk with views over the Cape Arid National Park, offering a close look at the varied plant and animal life in the area. Perfect for wildflower season.

LE GRAND COASTAL TRAIL

Difficulty: Hard

This 20km track links many of the park's most spectacular coastal sections and runs from Le Grand Beach to Rossiter Bay (via Hellfire Bay) and features excellent views. It's even more beautiful in wildflower season. Best tackled as a multiple day hike, be sure to carry drinking water and wear appropriate footwear.

MT RAGGED WALK TRAIL

Difficulty: Hard

If you fancy a trickier hike and a bit of a drive, a 170km trip east of Esperance you'll find this trail which takes you to the top of Tower Peak (594m). It's an adventurous climb, with rock faces and plenty of opportunities to spot the 160+ bird species found in the Cape Arid National Park. There are also campsites, toilets and barbeque facilities available.



Frenchman Peak, Cape Le Grand National Park
Image by: Tourism WA

STOKES INLET TRAIL & MOIR HOMESTEAD RUINS

Difficulty: Easy

Walk the Heritage Trail, a 4.3km (1.5 hour) return walk that includes on-site plaques describing changes that have occurred to the inlet environment. The path provides magnificent views of the inlet and its surrounds. Explore the beautiful “Moir Homestead” ruins, built over 140 years ago. Day visitors and bushwalkers can also enjoy Stokes Inlet, Skippy Rock, Shoal Cape, and Fanny Cove.

TAGON COASTAL TRAIL

Difficulty: Medium-Hard

Located in Cape Arid National Park (east). This 14km (4-6 hour) return journey starts at the western end of Yokinup Bay offering views over the wild coastline. During the winter months, you may spot a Southern Right Whale or two - they often swim close to shore in the sheltered bays. Head to Dolphin Cove lookout for the perfect whale watching location!

MOUNT RIDLEY

Difficulty: Easy

1hr north of Esperance, on Dempster Rd (off Fisheries Rd) you'll find a 4WD gravel track that leads you to Mount Ridley. Featuring Esperance's very own “Wave Rock”, as well as a glorious array of wildflowers and plenty of other cool rock formations. This area is a site of significance to our first nations people, so please be respectful when you visit.

THE KEPWARI WETLAND TRAILS

Difficulty: Easy

A 3.6km interpretive trail winding through Melaleuca thickets and heathlands, under Banksia canopies and over dune ridges. A short drive from Esperance town, the trail also features two bird hides for the keen observer, with Lake Wheatfield home to countless species. Kepwari is the local aboriginal word for 'place of moving water' and in winter you'll see why this name is so fitting.

ESPERANCE LAKES CANOE TRAIL

Difficulty: Easy

Try something a little different and explore the wetlands by canoe! The Esperance Lakes Canoe Trail is a wonderfully relaxing way to appreciate the peace, beauty and birdlife of the Esperance Lakes system on a paddle craft. Canoes can be launched at the Woody Lake boat ramp or at the Lake Wheatfield car park. Reflective trail markers are placed at intervals every 200 meters or so to help you navigate your way. Follow the markers and stay on the trail at all times. Times will depend on the route taken and wind conditions.



Bloomin' marvellous **WILDFLOWERS**

During the months of August through to November the Esperance wildflower season comes into full bloom, making it a 'blooming marvellous' time to visit. The entire South Coast is well known for its incredibly rich and unique biodiversity, which includes native orchids, banksias, grevilleas and many other species. Esperance is blessed with an endless variety of extraordinary flora, with our region putting on an incredible display of both inland and coastal heath wildflowers takes place.

Wildflowers reward the adventurous. The best way to truly experience the wildflowers is to park your car and explore on foot!

While we've compiled a list of Esperance's most popular wildflower hotspots (to follow), the local visitor centre can provide the most up to date wildflower locations (which can vary between seasons). Why not combine some wildflower spotting with one of our many walk / hike trails?



ORCHIDACEAE, *Caladenia cairnsiana*, Zebra Spider Orchid, found on Dempster Head Rotary Lookout Walk.
Image by: Katie White

DEMPSTER HEAD

360 degree views of the land and seascapes and various coastal walk trails. Featuring several species of flowering Eucalypts, Dryandras, Twining Clematis, Australian Bluebell, Fringe Lilies in early summer, Pimelea, Agonis, and Hakea.

WOODY LAKE NATURE RESERVE

Home to over 20,000 waterbirds, mostly from November to April, you'll also find here Bandicoots, Possums and Banjo Frogs. Go for a wander along the Kepwari Walk Trail which winds through fringing sedgeland, heathlands and paperbarks to discover wildflowers all along the path edges in springtime which become lined with Spider Orchids, Cowslips, Banksias, Wattle and Kangaroo Paws. Windabout Way (Off Fisheries Rd), 7 km north east of town.

FITZGERALD BIOSPHERE

Approx. 190 km west of Esperance, near Ravensthorpe, and home to the "Fitzgerald River National Park", the largest single national park in the south-west of Western Australia, home to 12 threatened fauna and 39 threatened flora species, and contains about 20 per cent of WA's described plant species, many of which are found nowhere else in the world.

HELMS ARBORETUM

A mammoth reserve where large expanses of natural bushland are accessible by gravel roads. There are hundreds of named plantations containing Western Australian trees, as well as Australian species from other states and exotic pine species. These all flower at the specific time of year for their species. Helms Arboretum is located 17km north of Esperance on the Coolgardie / Esperance Hwy. Dogs are not permitted.

MOUNT RIDLEY

Also known by its Nyungar name, Marbeleerup, Mt Ridley is a large granite outcrop which rises 300 meters above sea level. Out at Mt Ridley you'll find Casurinas, Jam Wattles, Dundas Mahogany, Cypress Pines, Quandongs, and Pincushion Hakeas, as well as a variety of birds and small wildlife. Dempster Road (off Fisheries Road), 71km north of Esperance, 4WD access only.

DUKE OF ORLEANS BAY

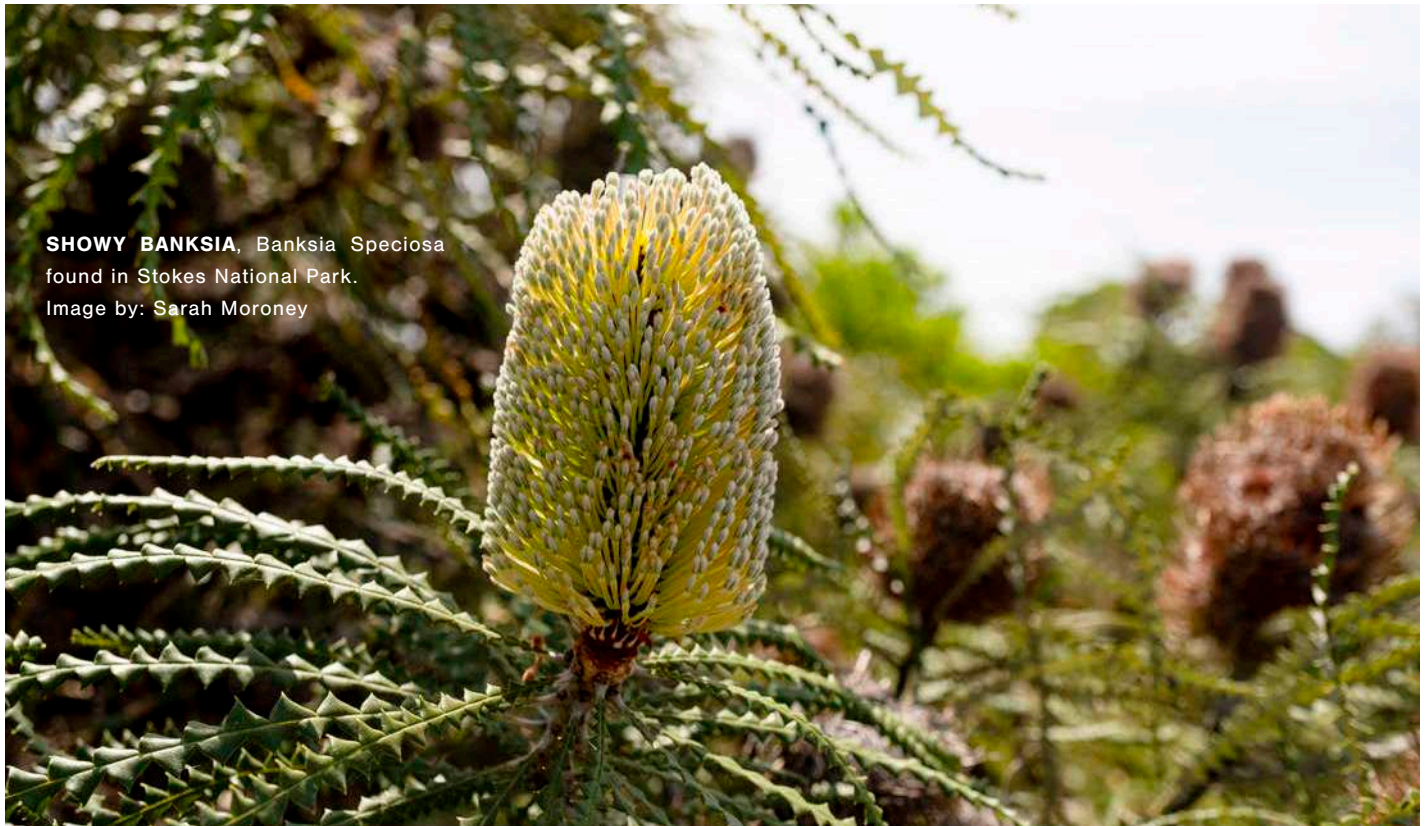
Affectionately referred to as 'The Duke' by locals, Orleans Bay is nestled on a peninsula and between October and December, you'll see The Duke at its most colourful, with a dazzling variety of wildflower blooms in the bush and over the sand dunes. 80km east of Esperance.

ESPERANCE'S WILDFLOWER FESTIVAL

The Esperance Wildflower Festival has been running for nearly 30 years and takes place in September. It is an annual showcase of around 500 local species of wildflowers which are picked under licence and put on display for all to appreciate. Wildflower enthusiasts will also delight in the photographic exhibition highlighting the local environment and student art exhibition. Located at the Anglican Parish Centre (cnr Andrew and Windich St). Entry via gold coin donation, school groups free. More info: esperancewildflowerfestival.com

CAPE LE GRAND NATIONAL PARK

The park's rolling heathlands are home to Pygmy Possums, Western Grey Kangaroos and an abundance of colourful wildflowers including dense thickets of Showy Banksia, Native Grass Trees, Kangaroo Paws and the celebrated Western Australian Christmas Tree (*Nuytsia floribunda* – which belongs to the Australian mistletoe family Loranthaceae). During the months of August and October the land bursts into sporadic sprays of seasonal colour, and a bushwalk along one of the many trails so you can get up close to them, is a must. Cape Le Grand Rd, Cape Le Grand, 50kms south east of Esperance.



SHOWY BANKSIA, *Banksia speciosa*
found in Stokes National Park.
Image by: Sarah Moroney

Discover unique treasures

GALLERIES & SHOPS

There are a wide range of retail stores lining the streets of town. With a diverse selection of fashion and lifestyle stores if you've forgotten to pack anything for your stay, we've got you covered. Whether surf wear or Bohemian style is your thing, or high street labels and top quality childrenswear is more your cup of tea, there is plenty to browse through. You can also find butchers, grocery stores and bakeries right in the heart of town. These local experts will proudly help you fill your basket with tasty goodies and their recommendations on the freshest supplies. A number of boutique homeware stores stock a wide range of products, from beautiful throws and cushions to locally made candles, as well

as indoor plants and giftware, and the chatty owners are always happy to point you in the right direction.

As you take the scenic roads out of town, you'll stumble across olive groves, honey producers, roadside produce stands and galleries showcasing works unique to Esperance. The range of creative endeavours pursued by some incredibly talented individuals is astounding. From glass sculptures and jewellery to Australia's only fish and shark leather specialist, woodworking, fine art photography to hand poured soy candles, you will certainly find some special momento to remember your visit.

The artistic scene in Esperance is big. With art workshops run year-round, numerous visiting and local exhibitions popping up as well as low-key and bigger music events, you'll be inspired by people's creative pursuits.

Pottery classes, pantomimes, documentary screenings, print workshops, dance classes, open mic nights, large murals and locally crafted gifts (like those you might find in the Museum Village) - if it's artsy and you can name it, you can bet you'll find it here in Esperance.



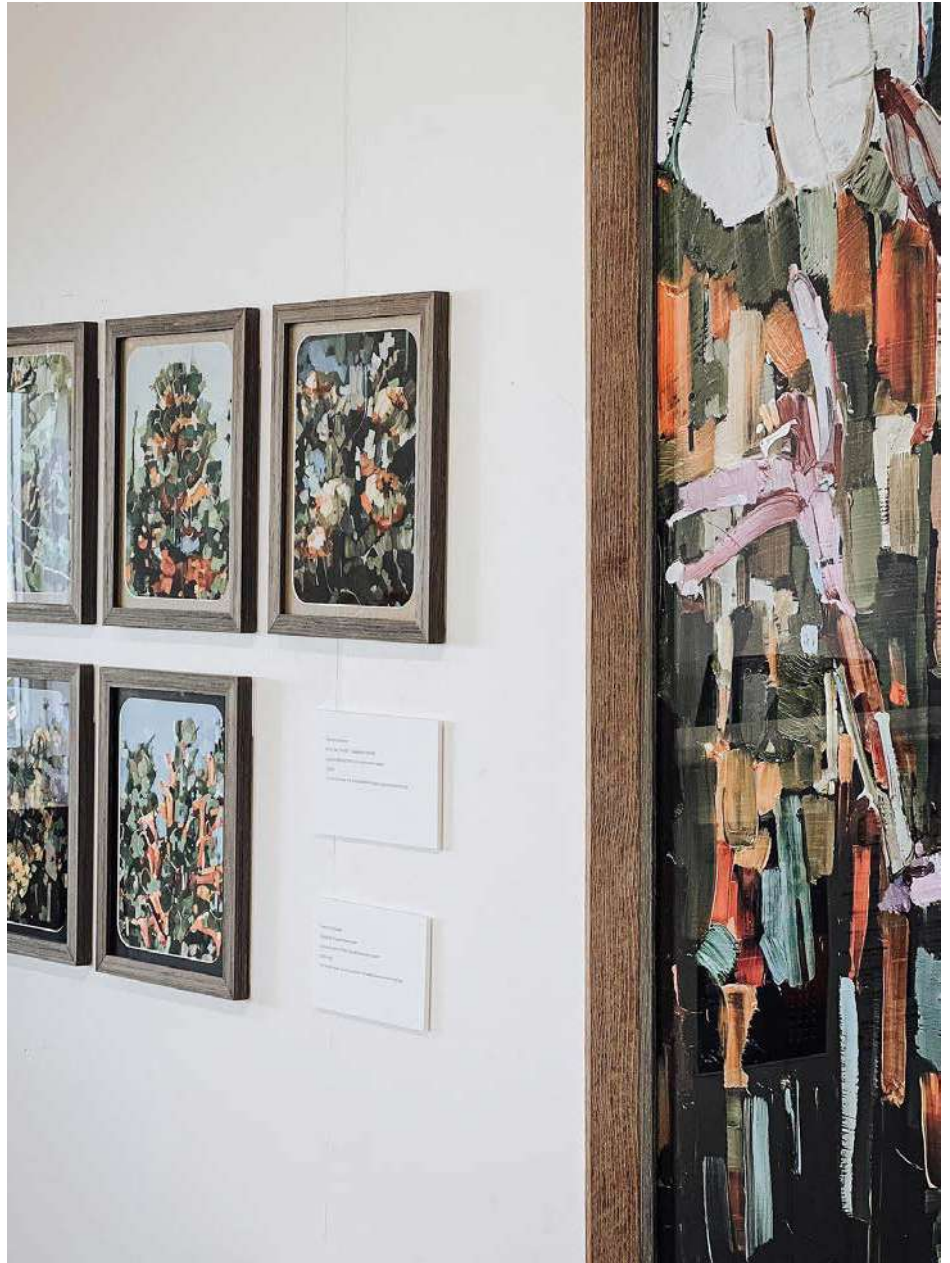
Cannery Arts Centre
Images by: Cannery Arts Centre

CANNERY ARTS CENTRE

Esperance's premier arts hub. Located on the stunning foreshore, its historic building (originally built as a fish cannery) and natural surrounds offer the ideal location to experience all that the Esperance arts scene has to offer. The Cannery delivers a diverse program of exhibitions, arts based workshops across several disciplines for children and adults, and a variety of events such as documentary films, open mics, and large scale music events. The centre is comprised of the region's main exhibition space, art, print, pottery and music rooms, as well as a shop selling unique wares. The Cannery's garden and lookout are ideal spots to relax after taking in all the best of rural WA's arts scene.
www.canneryartscentre.com.au

ESPERANCE COMMUNITY ARTS

ECA is a local collective advocacy for arts. They also partner on local arts projects with individuals, community groups, agencies and businesses to encourage cultural prosperity, diversity and access for all. Window display space at Esperance Community Arts Space at 67 Dempster Street (in the heart of town) is used to promote arts events and activities, while the gift shop features work by local artists and crafts people. The workshop space is used as a community meeting space by a range of local groups for drumming circles, dance classes, and craft activities. Opening hours are 1pm - 4pm Tuesdays - Fridays and by appointment.
www.esperancecommunityarts.org.au



LUXE FLORAL & HOME CO.

From past to present **OUR HISTORY & CULTURE**

NYUNGAR BOODJA

The Wudjari Nyungar People are the traditional custodians of the Esperance region. There is evidence of their presence that dates back to 13,500 years ago within Cape Le Grand National Park.

EUROPEAN EXPLORERS

French navigator, Antoine Raymond Joseph de Bruni d'Entrecasteaux, is credited as the first European to arrive in Esperance, when his two ships took shelter near Observatory Island during a wild storm in 1792. The town was named after one of the French ships, L'Esperance, which is French for "hope".

In 1802 British navigator Matthew Flinders sailed through the Recherche Archipelago and named several landmarks, including Lucky Bay. In 1841 Edward John Eyre and Aboriginal guide Wylie, met Captain Rossiter on their epic journey from Adelaide. Wylie Bay was named by Edward Eyre in honour of his local guide.

SETTLEMENT

Settlement in Esperance did not occur until 1864, when the pioneering Dempster Brothers made the lengthy journey from Northam on foot. With the assistance of Aboriginal guides they arrived to the area with over 3,000 head of stock including sheep, cattle and horses, to establish the Esperance Bay Pastoral Station.

In 1876 famous tracker and guide, Tommy Windich accompanied John Forrest on an expedition constructing the overland telegraph line from Perth to Adelaide. While in Esperance he developed pneumonia which led to his death in February 1876. He was buried on the edge of the Esperance Bay. The Tommy Windich Cultural Precinct, located at the entrance of Southern Ports is a memorial at the what is thought to be the original site of Tommy's grave.

POPULATION GROWTH

The Esperance townsite was formally gazetted in 1893 after the discovery of gold in the Eastern Goldfields. Seemingly overnight, the little town experienced an incredible transformation as fortune seekers from all over Australia and around the world flooded the once sleepy little port on their way to the Goldfields.

In September of 1895 Esperance was declared a municipality. It wasn't until the 1960s that the Esperance sand-plain began to emerge as a major agricultural region. The rise of agriculture as a key industry led to population increase and eventually the construct of the Esperance Port Authority in 1962, which furthered the diversification of the local economy.

The town of Esperance now has a population of approx. 14,000 people, boasting key industries such as tourism, agriculture, mining and fishing.



ESPERANCE MUSEUM

The Esperance Museum is located in the centre of town on James Street. Esperance has a rich maritime history and many of the exhibits feature this key part of the town's past, including the Esperance Museum building itself and the Goods Shed which was once an integral part of the local shipping industry.

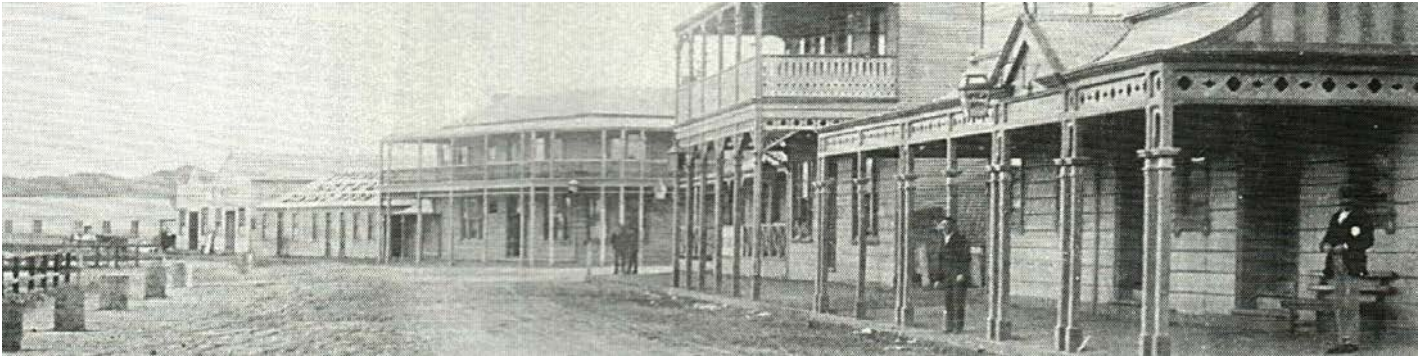
Among the displays are artefacts from nearby shipwrecks, including the famous

Sanko Harvest, and relics from the transient whaling and sealing industries that pre-dated European settlement.

Our early settlers left behind many reminders of their lives and livelihoods, and the Esperance Museum proudly showcases an impressive collection of vintage vehicles and machinery, early agricultural implements, furnishings, glassware and other invaluable memorabilia. Relive the charm of Esperance

in the 19th century in the Pioneers Display and experience a glimpse into life as a settler.

Among many crowning jewels in the Esperance Museum collection are displays showing NASA's space station 'Skylab' which crashed to earth nearby in 1979, an extensive collection of stunning local art pieces, a former pilot boat that once served the Esperance Port and countless more treasures waiting for you to discover.



Rain, hail or shine...

Take a step back in time!

FOR OPENING TIMES
VISIT OUR WEBSITE
OR FACEBOOK PAGE

Discover the Esperance of yesteryear through a large display of exhibits that invite visitors to unearth the stories of our region.

Submerge your senses in our history and explore the people and places. People of all ages are bound to learn something new!

Esperance
Museum



CONTACT US

(08) 9083 1580

ESPERANCEMUSEUM

ESPERANCE.WA.GOV.AU/MUSEUM

Dempster Street

Esperance
Museum

James Street

The Esplanade



THE MUSEUM VILLAGE

Wander through the fascinating collection of historical buildings that make the Museum Village on Dempster Street. Nowadays they house a cafe, craft shops, artist's galleries, retail stores and the Esperance Visitor Centre.

Esperance Visitor Centre

The Visitor Centre was constructed and opened in 1983-84 as a purpose-built tourist bureau.

Police Sergeant's Quarters

This building was built in 1927 as the Police Sergeant's Quarters. In 1986 the old Sergeant's Quarters were moved to the Museum Village as a new Sergeant's house was built, the Police Station enlarged, and a new Crown Court of Law added.

Old Hospital Building

In 1896 the local population formed a vocal and instrumental group which petitioned the need for a town hospital. This led to a hospital being built on Hicks Street, later the original building was bought and relocated by Mr Baird to William Street and used as a BnB. It is the latest addition the Museum Village, moved in 2009.

Chemist Shop

Originally built sometime in the 1930s as a newsagent, ownership changed numerous times before it housed Esperance's first qualified chemist, Mr Jack Stewart. The building remained as a chemist until the 1970s when it was retired to the Museum Village.

Methodist Church

This quaint building was originally built in 1895. Originally built on Dempster Street, the church was moved twice before coming to the Museum Village in 1979.

Salmon Gums School

The original building was the school room at the Princess Royal Mine in the Norseman Goldfields. In 1916 it was transferred to Norseman as the primary school, before the Salmon Gums community acquired it as their first school from 1928. By 1972 it was relocated the building again to the Museum Village.

Old Courthouse

Officially opened in June 1896, this building was constructed for the Esperance Shire as Council Chambers and was located in Andrew Street. In 1898 the building became the official Courthouse, which it remained until 1967 when a new courthouse was erected in Dempster Street. 1975 combined service clubs in Esperance worked to stabilize the old building in order to move it to its new home here at the Museum Village.

Hospital Matron's Quarters

After servicing the Wellard area as a hospital, this building was removed and re-erected in Esperance in 1930. The Esperance hospital was officially opened in this year and this building served as the matron's quarters in the hospital grounds. After being used for physiotherapy and pathology during its life, it was added to the Museum Village in 1983.

Doctors Surgery

First built in 1900, the Daw family moved this building from Red Lake where it had been a store. It was transported down to Esperance in the late 1940s and established as an office. Later it used by Dr Tom Burcher as his surgery until 1973. It was not occupied again until it was moved to the Museum Village.

Sinclair House

From all reports "Sinclair House" started out at the turn of the century as part of a large dormitory-style building, housing Mr. Bill Gibson and his family in William Street. His daughter then bought the home after his death and later sold to Mr. Frank Dunn, who deciding the building was by far too large, sold half to Mr. Les Sinclair who lived there with his sister Ethel after moving it to Dempster Street. It was then home to Ethel and her husband Roy for all their married life. Sometime after the couple had passed away, their son Neil made the gracious gift of "Sinclair House" to the Museum Village.

School Master's House

This building has had many purposes, firstly to house the schoolmasters since 1940, later it was purchased by the Esperance Shire Council to house employees. In 1978 it was acquired as a centre for aged people to meet for social activities, but in 1980 the building was vacated, and in 1983 the Esperance Shire Council moved it to the Museum Village.



ESPERANCE MUSEUM VILLAGE




Naturally Esperance
 Mon: 9am-2pm
 Tues-Fri: 9am-4pm
 Sat: 9am-1pm
 Sunday market days

[naturallyesperance.com.au](https://www.naturallyesperance.com.au) • 0458 798 841

MUSEUM VILLAGE MARKETS

2022/23 DATES
 Sept 11th & 25th
 Oct 9th & 23rd
 Nov 6th & 20th
 Nov 27th - Balmy Brunch
 9am-2pm featuring music
 from Kyza Presents.
 Dec 4th, 11th & 18th

Jan 8th, 15th & 29th
 Feb 12th & 26th
 Mar 12th & 26th
 Apr 9th & 23rd
 May 7th & 21st
 Jun 4th & 18th
 Jul 2nd, 16th & 30th
 Aug 13th & 27th



Tues-Fri: 10am-4:30pm
 Sat & Sun: 10am-12:30pm
 Market Day: 9am-12:30pm
 Ph: 0415 388 420

[espofesperance](https://www.espofesperance.com.au)

Shoes, Bags,
 Jewellery,
 Gifts & Souvenirs



Pink Lily Beauty
 Mon: Closed
 Tue & Wed: 9am-4.30pm
 Thur: 9am-2.45pm
 Fri: 9am-2.45pm
 Sat: 9am-1.00pm

[pinklilybeauty.com.au](https://www.pinklilybeauty.com.au)
 Ph: 0408 715 579



La Breeze


Unique gifts, souvenirs, artwork & accessories.
 Seasonal wildflower tours.

Open Summer 7 days • Winter reduced hours

[LaBreezesesperance](https://www.labreezeesperance.com.au) • Ph: 0476 071 510

DEAR VILLAGE

BOOKS & LIFESTYLE



Tues-Fri: 10am-4pm
 Sat & Sun: 9am-12.30pm
 Sunday Markets: 9am-12.30pm

[dearvillage](https://www.dearvillage.com.au)
 Ph: 0417 944 607

WILD POSSE

A store curated for mother and child.

Mon-Fri: 10am-4pm
 Sat & Sun market days: 9am-12.30pm

[wildposse.com.au](https://www.wildposse.com.au)



BISTRO LOUIS

OUI OUI

**French Food
 Fab Coffee**

[bistolouis.com.au](https://www.bistolouis.com.au)
 Ph: 0424 541 611



THE YELLOW FIG

BOUTIQUE GALLERY

Opening hours vary to suit the season.
 Contact anytime.

Ph: 0427 765 008
[the.yellow.fig](https://www.theyellowfig.com.au)
 The Yellow Fig

Brodeine & Deine

Clothing designed locally and inspired by the beauty of Esperance. The edgy boho designs are perfect for everyday wear.

Opening hours vary to suit the season. Contact anytime.

[brodeine.com](https://www.brodeine.com) • Ph: 0428 395 465

[Brodeine&Deine](https://www.facebook.com/Brodeine&Deine) [brodeine_deine](https://www.instagram.com/brodeine_deine)



INVICTUS HEALTH HUB

Intuitive | Primordial | Complete

[invictusclinics.com.au](https://www.invictusclinics.com.au) • Ph: 0458 798 841

Reach out to us via our contact page,
 or book a free consult to find out more.




Esperance Visitor Centre
 Open 7 days (except Christmas Day & Good Friday)
 For opening hours, itineraries and attractions:
[visitesperance.com](https://www.visitesperance.com) • Ph: 1300 664 455

Guide to Dining out

FOOD & DRINK

Breakfast, lunch or dinner, we have you covered with a broad range of eateries. The foodie scene in Esperance is ever-changing, with a mix of cafes, restaurants, takeaway shops/vans and pubs. In town or out, with a local or international flare, you're sure to find something to satisfy your taste buds.

There are plenty of places serving up the perennial takeaway favourites, fish and chips and wood-fired pizza. Grab a bottle of wine or a 6-pack from one of the local liquor stores and take your picnic of salty goodness to be enjoyed at the beach, in a park or along the foreshore.

If pub food is more your thing, you won't be disappointed. There are family friendly options in town, as well as charming pubs out of town that serve up all the classics like chicken parmigiana, burgers and steaks. The taps are always pouring local and popular Australian brews and no matter where you go, you'll be served a side of country hospitality.

The number of Asian influenced eateries has been steadily on the rise in Esperance, with some spectacular food on offer. Hearty curries, noodles and stir-fries with plenty of vegetarian options available, if you love some spice, you'll find something nice!

When it comes to drinks, there are cocktail bars and pubs, as well as locally stillled spirits and beers brewed right here. Waterside, town central or family friendly, there are plenty of places to sit and enjoy a cold one whilst you soak up the relaxed atmosphere around you.

And then there is the coffee. From locally roasted beans to cups of the finest barista brews served alongside pastries, biscuits and slices. If caffeine isn't your thing, you can also find freshly squeezed and cold pressed juices and your idea of the ultimate smoothie blend to nourish your soul. No matter what part of town you're in, you are guaranteed to get that hit you need for fuelling your day of adventure around Esperance.



Taylor Street Quarters
Image by: Tourism WA



*Superb dining
location
overlooking
the Bay*

Modern, innovative cuisine
and tempting menu

Enjoy a pre-dinner drink in
the cocktail bar

Open daily for breakfast
and dinner

Bookings essential - 9071 1999

44-46 The Esplanade, Esperance WA
E: esperance@hospitalityinns.com.au
W: www.hospitalityinnesperance.com.au

ESPERANCE DISTILLERY CO

Taste the Spirit of Esperance

A father and son team producing coastally inspired craft spirits from locally foraged botanicals around the Esperance region.

Drop by our cellar door for a tasting, or visit us online.

esperancedistilleryco.com | [@esperancedistilleryco](https://www.instagram.com/esperancedistilleryco)

A 'Foodie' Adventure

LOCAL PRODUCE

CONDINGUP TAVERN

Located 65kms out of Esperance and set between the stunning Cape Le Grand and Cape Arid National Parks, the "Condy Tav" is the ultimate pit stop for any coastal trip along our eastern coastline. Open for lunch and dinner 7 days a week, the Condingup Tavern offers a range of other superb pub grub, beer on tap and coffee with cake.

Chill outside in the shaded beer garden after a big day at the beach, or drink and dine inside to soak up the old school pub styling.

OLIVES & TREATS

Overlooking the sprawling farmland and the Recherche Archipelago beyond, Yirri Grove comprises of 12 acres of lush olive trees, nestled among 48 acres of working property and farmland.

On location you'll discover a commercially producing olive and olive oil farm, as well as a sustainable, wholesome and real paddock to plate experience.

The Yirri Grove Restaurant and Farm Shop offers olive tastings, a range of local gifts and great coffee, cakes and lunches.

BUSH TO BOTTLE

The father and son team behind Esperance Distillery Co. produce quality spirits through a small-batch process that is truly "bush to bottle". A mutual love of high-quality spirits, surfing and environmental conservation has driven the pair to create a range honouring the internationally significant floral diversity of the Esperance region.

They operate a small cellar door on Norseman road, open to the public for spirit tastings and bottle sales. Check Instagram or Google for their seasonal operating hours.



Yirri Grove Olive Farm
Image by: Yirri Grove



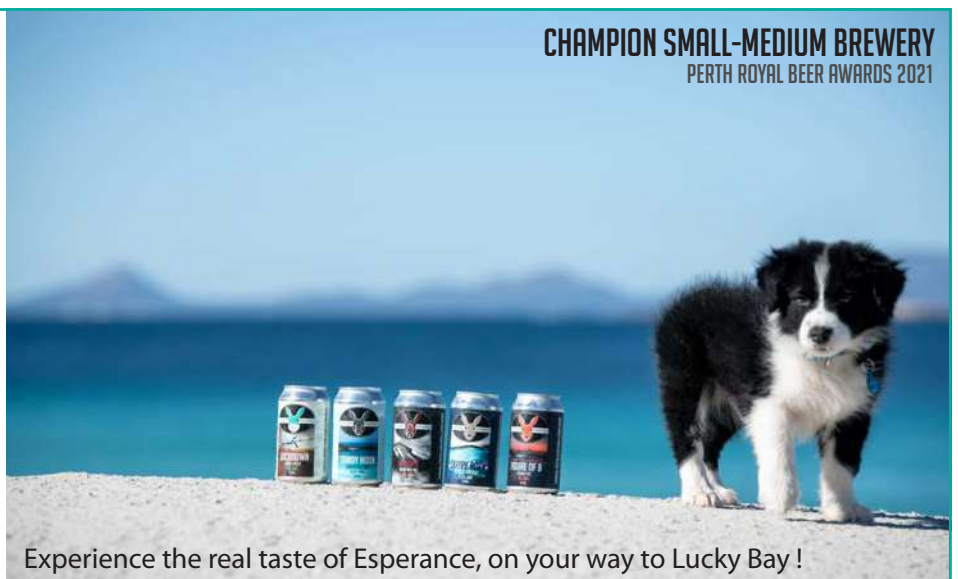
TRULY LOCAL CRAFT BEER

Family & pet friendly, live music, beer, wine, cider, wood-fired pizza, full menu, fire-places, beer tasting, tours, gifts.

LUCKYBAYBREWING.COM.AU

63 Bandy Creek Rd, Esperance

CHAMPION SMALL-MEDIUM BREWERY
PERTH ROYAL BEER AWARDS 2021



Experience the real taste of Esperance, on your way to Lucky Bay!



LOCAL CRAFT BEER

Few breweries can claim to keep it as 'local' as Lucky Bay Brewing in Esperance. Their impressive process ensures that home-grown barley comes straight from local farmers, directly to their door step.

At their agri-inspired brew house located on Bandy Creek Road you'll find more than a pint of cold beer, their new kitchen features a changing menu. A cozy firepit sits high on the verandah, overlooking a sprawling lawn, perfect for the kids to run around on causal afternoons. Local musicians often play acoustic sets, so check their socials for the latest line-up.

Unexpected Encounters **GUIDED TOURS**

ESPERANCE STONEHENGE

The Esperance Stonehenge is a full size replica of the UK Stonehenge. It appears as the original is thought to look around 1950BC. Constructed from 137 stones of Esperance Pink Granite, the Esperance Stonehenge is located roughly 15km from town along Merivale Road (on the way to Cape Le Grand National Park).

The Stonehenge was built to align with the Esperance solar calendar, meaning in December as the sun rises rays align with the Heel Stones and shine through to the altar stone for the Summer Solstice. The sunset of the Winter Solstice repeats the same alignment in reverse. Stonehenge is open daily and situated on a working farm, so please ensure pets remain in the car park.

ESPERANCE FARM EXPERIENCE

Discover the typical seasonal activities of farm life and witness the farmer at work. Together Andrew and Renae are eager to share life on their mixed farming enterprise, Oake Marsh Farm, 25km north-east of Esperance.

You can expect to see lots of animals, from pet lambs and calves, friendly sheep dogs, fussy hens, Black Angus and Gelbvieh cows to all manner of wildlife including kangaroos, emus, foxes, water birds, bob tail goannas and snakes. During this authentic agricultural experience, hear the history of farming in the region and the story of Oake Marsh Farm.

DABUNGGOOL CULTURAL TOURS

Delve into the six seasons on country with the team at Dabungool. Local Nyungar guides will walk with you, sharing knowledge of plants, animals and life as you experience Kepa Kurl Nyungar Boodja through a cultural lens. With no set tours, every experience is booked at a convenient time for you to explore this genuine learning experience.



Winter Solstice, Esperance Stonehenge
Image by: Sarah Moroney



Your Esperance Getaway

ACCOMMODATION SNAPSHOT

A PLACE TO CALL YOUR OWN

There's a huge choice of self-catering accommodation sure to suit any sized travelling party, many within just a stone's throw away from the beach. Whether you're on a romantic getaway for two, or a group holiday, be sure to check out Esperance's range of fully self-contained accommodation options:

Yot Spot Apartments, Esperance Central Accommodation, Driftwood Apartments, Esperance Holiday Apartments, Goldies Place or JJs Holiday Cottages. The Comfort Inn Bay of Isles, Hospitality Motel and Bayview Motel also provide a great quality home away from home.

TENT, SWAG AND MOTORHOME

Travelling carefree with just a few belongings and a tent doesn't mean you are restricted to where you can stay! Esperance offers a range of lush, shaded and grassy sites where you can pop up (or pull up) your temporary home and comfortably base yourself for endless adventures.

Powered and unpowered sites are available and are small or large enough to suit all sizes of self-sufficient travellers.

Book at Bathers Paradise, Esperance Bay Holiday Park, RAC Esperance Caravan Park, Pine Grove Holiday Park, Bushlands Holiday Park or Pink Lake Tourist Park. Venture out of town and stay beachside at the Orleans Bay Caravan Park or Munglinup Beach Caravan Park.

LUXURY STAYS

Choose a stunning and intimate holiday home or luxury apartment by the sea for your next indulgent getaway to Esperance.

Rent an executive style house or resort style unit providing first class service and amenities and lavish sleeping spaces. Spa suites and balcony views are sure to turn up the romance, as does the close proximity to a range of fine dining restaurants, or a sunset walk by the ocean. Check out the Jetty Resort, or Esperance Island View Apartments.

BED & BREAKFAST

Nothing symbolises 'relaxing holiday' quite like lengthy sleep ins and having brekkie cooked for you – this paired with invaluable local knowledge, makes Esperance's range of comfortable and luxurious bed and breakfasts the complete lodging experience. Try out A Tranquil Retreat B&B for the ultimate bed and breakfast experience.

BUSHLAND SETTING

Book to stay on one of Esperance's semi-rural properties, such as Esperance Chalet Village, La Cabane Retreat or A Tranquil Retreat B&B, and you'll wake to nature surrounding you! If you've got a spare few hours, start the day by exploring the property, spot the birdlife, hunt for wildflowers and discover the natural surrounds.



The Esperance Chalet Village offers casual and considered rooms for those seeking accommodation with a difference. Nestled amongst nature the village is a secluded and stylish holiday hideaway.



ESPERANCE CHALET VILLAGE

Book your stay today

www.esperancechaletvillage.com.au

Tel: (08) 9071 1861

Frank Freeman Drive
Esperance, WA, 6450





Perfectly private and ideally located between the jetty and town centre, these stunning multi-award winning apartments are yours to enjoy for either business or pleasure. Luxuriously spacious with ocean views, these fully self-contained one and two storey apartments suit couples, families or friends holidaying together.

Equipped with every comfort including: free wifi, CD Stereo, LCD TV, DVD, fully equipped kitchen, private laundry and BBQ on your spacious balcony or courtyard. Spa apartments and facilities for disabled are also available. Facing north-east, Esperance Island View Apartments are perfect for any season, attracting the winter sun, or cool breezes in the summer time. Directly opposite the revitalised Esplanade foreshore and offering picturesque island views of the Esperance Bay. Complimentary use of board games and DVDs.



e: admin@esperanceapartments.com.au
www.esperanceapartments.com.au
 14-15 The Esplanade (PO Box 716)
 Esperance, Western Australia 6450
 ph: (08) 9072 0044 or 1800 440 508

ESPERANCE
ISLAND VIEW
 APARTMENTS





**BAYVIEW
MOTEL**
ESPERANCE

31 DEMPSTER STREET,
ESPERANCE WA 6450
(08) 9071 1533



Clean, comfortable and affordable accommodation in Esperance conveniently located in the centre of town.

Bayview Motel is just a 10 minute walk from the local restaurants, shops and cinemas AND just a 2 minute walk from Australia's most beautiful beaches.

Our aim is your complete enjoyment. Our well-appointed motel rooms have all the comforts you would need away from home.

Our commitment to you, our guest, is paramount for each and every one of us here.



reception@bayviewmotel.com.au • www.bayviewmotel.com.au



Pink Lake Tourist Park



Surrounded by trees and grassed areas, 2km from town centre. Ideal for quiet, relaxed getaway. Accom options include deluxe 1 & 2 bedroom villas with TV, free WiFi, microwave, aircon, kitchen, linen supplied. Ensuite cabins, budget cabins. Large shady powered/unpowered sites, campers kitchen and BBQ areas. Pets accepted - strict conditions.

Freecall: 1800 011 311
119 Pink Lake Road, Esperance WA 6450
Email: pinklake@westnet.com.au
Web: www.pinklakepark.com.au



Comfort Inn Bay of Isles

62 modern motel units

- Premier motel and function centre located on the beachfront and a short stroll to town.
- Eljay's Bar & Restaurant onsite.
- Free Wi-Fi and Foxtel (20 Channels).
- Perfect spot to base yourself to discover the beautiful Esperance beaches.



Tel: (08) 9071 9000
Fax: (08) 9071 3800
Email: reservations@comfortinnbayofisles.com.au
Web: www.comfortinnbayofisles.com.au



JJ'S HOLIDAY COTTAGES



Relax in your own private patio and enjoy the sound of the rolling waves, or take a leisurely stroll on the beach nearby. Close to shopping and children's playground. TV/DVD, reverse-cycle air-conditioning and ALL LINEN SUPPLIED.

Pet friendly - dogs, cats and budgies welcome!

Rates: From \$170 per night
T: 0402 459 915
www.jjholidaycottage.com.au

Driftwood Apartments

- Four ground floor self-contained 2 bedroom apartments, private covered decks & BBQs.
- Three two storey luxury self-contained 2 bedroom apartments with spas & BBQ balconies.

Reverse cycle air-con, full cooking & laundry facilities. A short stroll to CBD, restaurants, parks & island cruises.



69 The Esplanade, Esperance WA 6450
Tel: 0428 716 677
Email: info@driftwoodapartments.com.au
Web: www.driftwoodapartments.com.au



BATHERS PARADISE CARAVAN PARK

Quiet, shady park 100m to beach, grassed & hard sites available. Caravans, motor homes & tents. Pet friendly park & dog beach. Short stroll to 7 day shops. Cycleway along foreshore to town.



www.batherscpark.com.au

ESPERANCE



Pine Grove
HOLIDAY PARK



Enjoy the magic of Esperance from this relaxing and spacious parkland setting with facilities including pool, playground and 2 camp kitchens. Wide range of accommodation options including cabins and holiday homes, pet-friendly sites, ensuite sites and large camping area, as well as budget RV sites off-season.

817 Harbour Road, Chadwick,
ESPERANCE WA 6450
T: 08 9071 4100 M: 0498 321 888
Email: pinegrove@acclaimparks.com.au



www.acclaimparks.com.au



Orleans Bay Caravan Park



Just 90km east of Esperance, beautiful peaceful location on the beach. 6 chalets and 6 park homes. Plenty of powered and unpowered sites.

Lot 1 and 5 Wharton Road
Via Condongup WA 6450
Tel: (08) 9075 0033
orleansbaycamp.com.au

Let us do the driving



Leave your car at home and enjoy the stunning scenery WA has to offer.

We can take you to more than 240 destinations in regional Western Australia including Albany, Esperance and Kalgoorlie. All our services are spacious, air conditioned and fully accessible, with on board bathroom facilities.

With 50% discount for Seniors and WA Pensioners and up to 75% for families when you travel with between two and four children*, there has never been a better time to travel with us.

To book your next holiday, or to see where Transwa can take you, call **1300 662 205** or visit transwa.wa.gov.au.

*Terms and conditions apply.

Bringing WA closer 

Eljay's Bar & Restaurant




OPEN FOR BREAKFAST & DINNER

- Bar open from 5pm • Quality Cuisine •
- Friendly Service • Fully Licensed •

Located at the Comfort Inn Bay of Isles
32 The Esplanade
Reservations ph: 9071 9000

FRENCH FOOD AND FAB COFFEE!



BISTRO LOUIS RESTAURANT CAFE & CATERING

OPEN



Museum Village
bistolouis.com.au
Ph: 0424 541 611

Yirri Grove

RESTAURANT & FARM SHOP



Olive tastings • Local gifts • Coffee & cake • Lunch

1544 Fisheries Road Myrup
Bookings: 0407 257 255
Open 10am-4pm Sat, Sun & Mon

Cindy Poole GLASS GALLERY



DESIGNER / MAKER / GLASS ARTIST

Immerse yourself in a visual journey of discovery into our 'World of Glass.'

Browse the Gallery, or book a Behind the Scenes Tour to 'Discover & Create'.

Think Recycled Glass
THINK AGAIN...

OPEN
Mon - Sat
1pm - 4pm
Stop for 'Afternoon Tea during the 'Great Ocean Drive' loop.
23 Longbottom Lane, Pink Lake
cindypool.com.au


Aurelia's

Ice Creamery & Cafe

Over 30 Flavours of Ice Cream
Take Away Foods
Homemade Pies & our Famous Sausage Rolls
Lunch Time Specials
Catering - Platters
Gourmet Salads

9072 0002
Cnr The Esplanade & Emily Street

 Like us on Facebook

Black Jack Charters



Fish or dive in the unspoilt Recherche Archipelago off the Esperance coast. Have a great day out on or under the water with your mates or family. Please see our website for more details.



For bookings or more information
Skipper Tel: 0429 106 960
Web: www.blackjackcharters.com.au



This beautiful bird and animal park is ideal for kids & the whole family. Cuddle the cute rabbits & guinea pigs or hand-feed the animals. Be amazed by the many colourful birds. Pet-friendly accommodation is now also available!

Open Thursdays & Fridays from 9am - 3pm,
Saturdays & Sundays 8am - 3pm
Closed Mondays, Tuesdays & Wednesdays

Enjoy a \$10 All Day Breakfast, drink & snacks in the café!

Lot 3/549 Coolgardie-Esperance Hwy, Esperance
08 9076 1067

SEE, TOUCH AND TASTE
the diversity of agriculture in Esperance. Get up close and personal with life on a farm. Hands on appeal for all ages.

ESPERANCE
FARM
EXPERIENCE



Bookings before arrival essential.

0438 935 996

Book at: www.EsperanceFarmExperience.com



ESPERANCE STONEHENGE

Did you know there is a full size granite replica of the UK Stonehenge in Esperance?
Come and marvel at the wonder that is Esperance Stonehenge.



Open Daily 9am - 3pm

817 Merivale Road, Esperance (On the way to Cape Le Grand)
08 9075 9033

Bob & Jim's GENERAL STORE

We have the juiciest fruit in town*

73 Dempster Street, Esperance



*store may also contain traces of vegetables, artisan chocolate & charcuterie, super cute house wares and dangerously delicious cakes on Saturday mornings.



Visit our Studio to view our complete range of finished products. Gain insight into the unique world of fish, shark & stingray leather.

Open 6 days 2-5pm, CLOSED MONDAYS
6 Woods St, Esperance WA 6450

Tel/Fax: (08) 9071 5248

Email: mermaid@comswest.net.au

Web: www.mermaidleather.com.au

ONLINE SHOPPING

FLICKR

candles by tbt

"The One Stop Giftshop"

Shop 15, 91 Dempster St
Dutton Arcade, Esperance WA

(08) 9071 4878

www.flickrcandles.com.au

@flickrcandlesbytbt



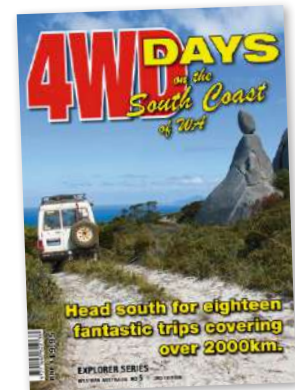
Open 7 days a week
7am to 7pm

PINK LAKE IGA FOR ALL YOUR
ICE, BAIT AND GROCERY NEEDS



72 Pink Lake Road
Phone 9071 1733

GUIDE BOOK



EXPLORE A WILD COAST

This guide book will transport you to some of the most delightful places we know of. The trips emanate from various points of origin along the south coast such as Israelite Bay, Esperance, Hopetoun, Bremer Bay, Wellstead, Albany, Denmark and Walpole.

ORDER YOUR COPY TODAY FROM \$19.95

western4wdriver.com.au

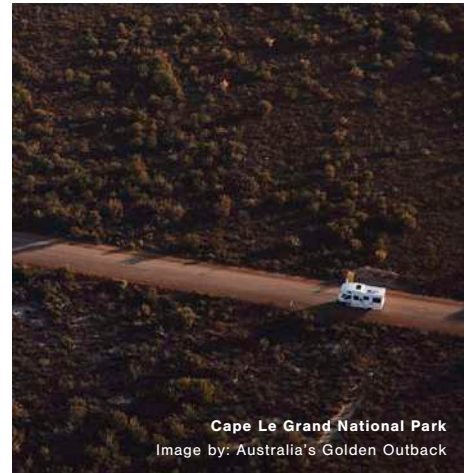
Western
4W DRIVER
WA's own 4WD Magazine



Image by: Australia's Golden Outback

Your route to getting here **ALONG THE WAY**

Whether you're heading down from the north, escaping the big smoke for a weekend, or your road trip to Esperance is part of a larger journey – be sure to stop in at one of the many regional visitor centres along the way. Offering extensive insight into the history and character of WA's remote regional towns, information centres are also a wealth of knowledge when it comes to road conditions, picnic and RV / camping facilities, essential services, unique attractions and other points of interest not to be missed on your travels! So break up the drive, stretch your legs, pause and truly discover the region on your next unforgettable WA road trip.



Cape Le Grand National Park
Image by: Australia's Golden Outback



Norseman Woodlands Cultural, Community and Visitor Centre

The Woodlands Centre is a must-see with friendly staff ready to welcome you to Norseman.

Whether seeking information, enjoying the interpretive displays, watching the murals come to life with AR technology, or shopping for a souvenir to show off after your travels, the Woodlands Centre has everything you need.

78 Prinsep Street, Norseman WA 6443
T: (08) 9039 0040
E: tourism@dundas.wa.gov.au
www.dundas.wa.gov.au



SLOW DOWN AND ENJOY THE JOURNEY.

IT'S TIME TO DISCOVER LAKE GRACE,
NEWDEGATE, LAKE KING & VARLEY.

PHOTOGRAPHY BY PRESENT MOMENT PHOTOGRAPHY



Conveniently situated half way between Perth and Esperance, the Shire of Lake Grace is the perfect place to take a break. Refresh yourself with food and coffee or stay a little longer and immerse yourself in the striking salt lake scenery, unusual rock formations and wildflowers. Be inspired by the museums, story trails and art displays, including the PUBLIC Silo Trail native wildlife mural by Brenton See in Newdegate.

LAKEGRACEVISITORCENTRE.COM.AU

LAKE GRACE
VISITOR CENTRE





Summerstar

Tourist Parks



ESPERANCE BAY HOLIDAY PARK

A small family friendly park situated 1km from the town centre (5-10 min walk).

Walking distance to calm swimming beaches, Adventure Land Park and fishing jetties, with a variety of cafes, restaurants and hotels close by.

A variety of self-contained, well appointed one & two bedroom chalets with lounge, large flat screen TV and DVD.

All linen supplied.

Budget accommodation available in our basic cabins (sleeps up to 6 people, no ensuite).

Catering for Caravans, Motorhomes, Camper trailers & tents.

A range of grassed sites, cracker dust sites and slab sites available. All close to the park amenities.

The park has 2 laundries, TV room, BBQ area, a small children's playground & camp kitchen.

PH/FAX: (08) 9071 2237 | **FREECALL:** 1800 999 923

E: info@esperancebayholidaypark.com.au

162 Dempster Street, Esperance WA 6450

www.summerstar.com.au



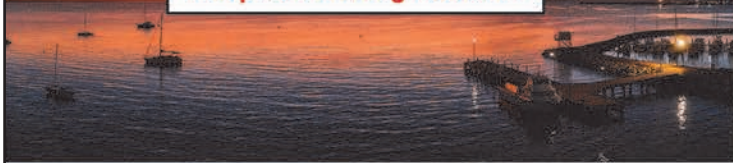


Scenic Wildlife Cruises
Experience wildlife up close in their natural environment

Esperance Island Cruises - esperancecruises.com.au - 9071 5757

ESPERANCE Diving & Fishing

Deep Sea Fishing Charters



Esperance Coastal Tours
4x4 Beach Bus Adventures



Esperance Diving & Fishing - esperancedivingandfishing.com.au - 90715111

Esperance Coastal Tours - esperancecoastaltours.com.au - 90715111